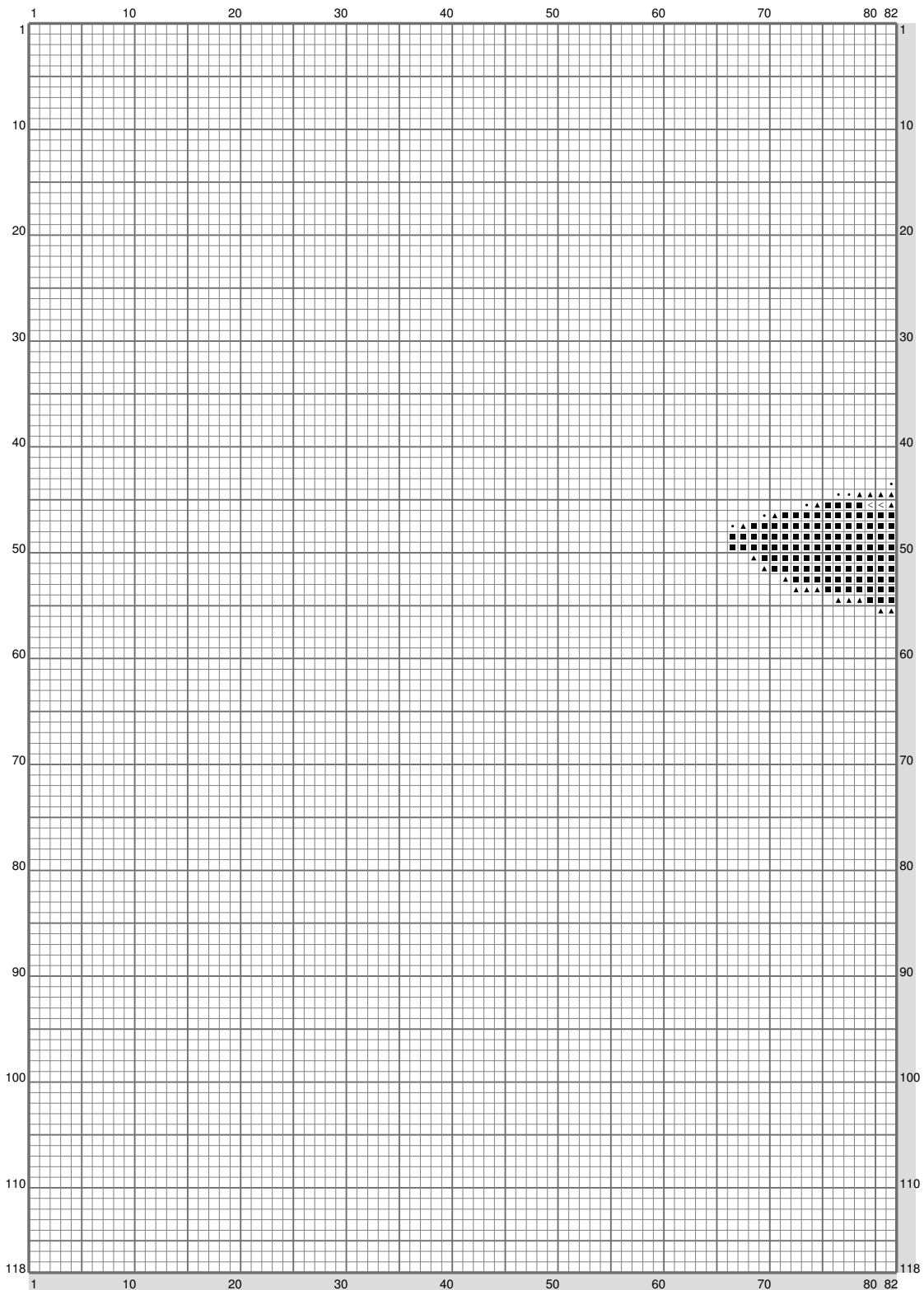
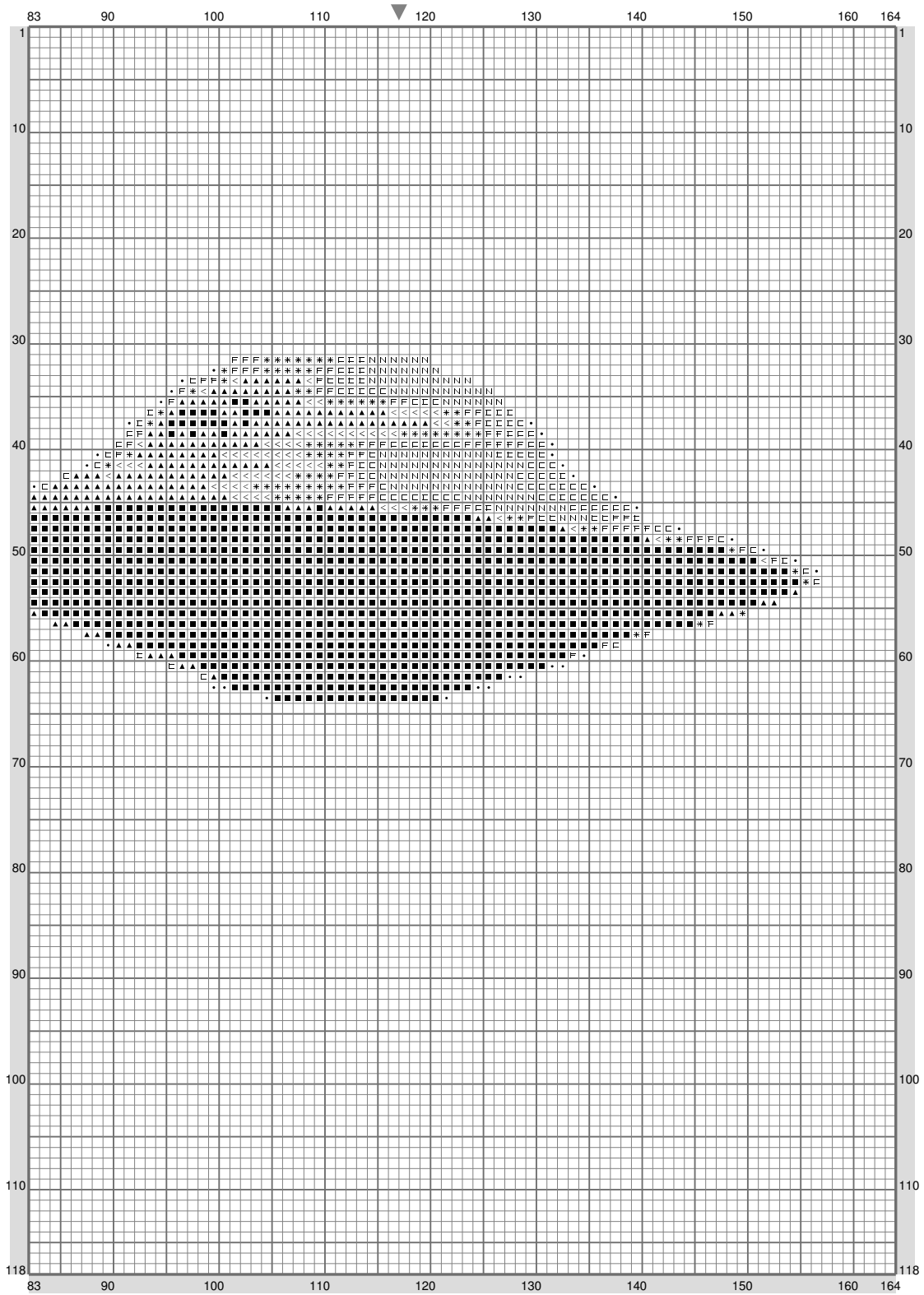


I want to believe



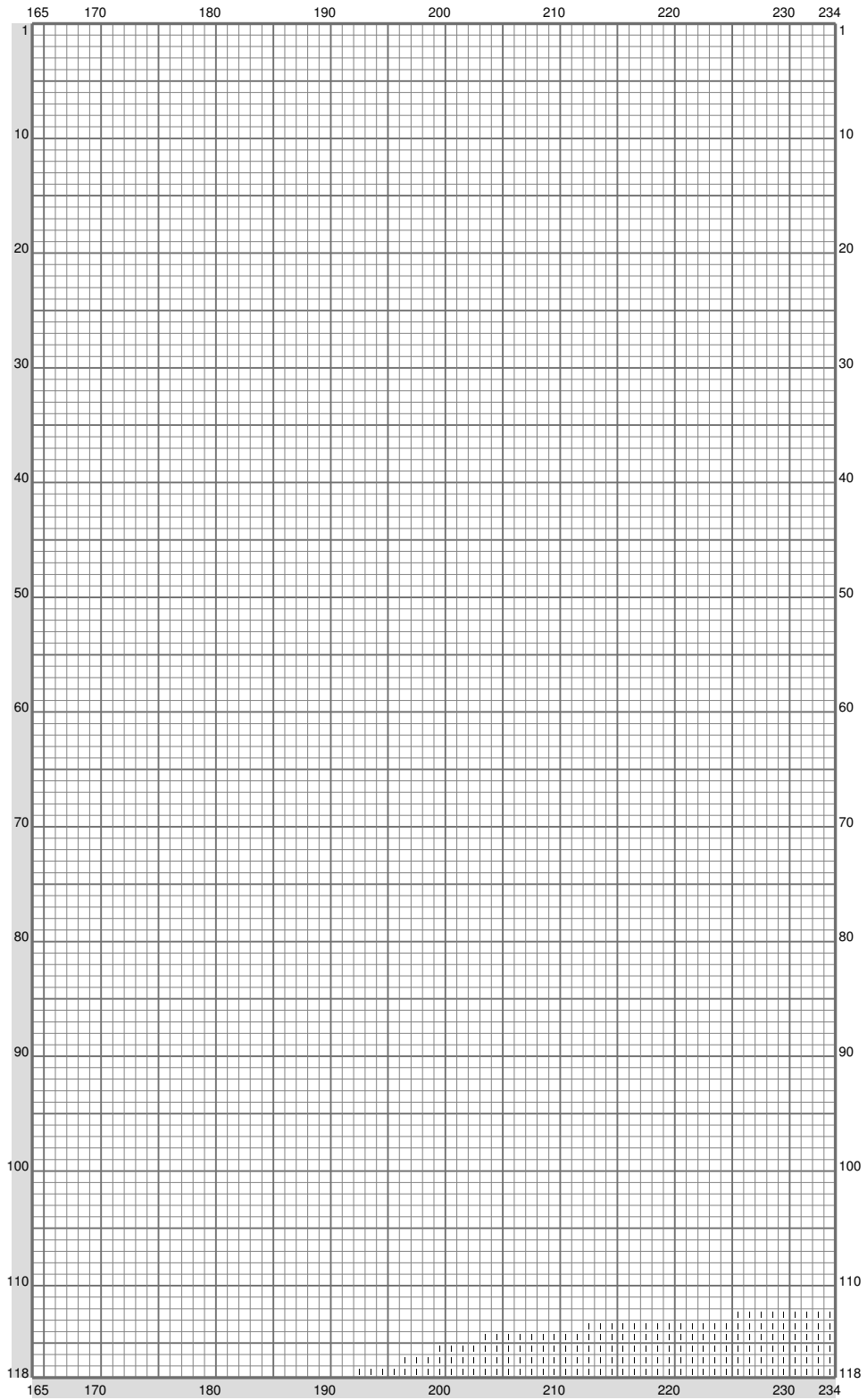
(This chart is printed using KG-Chart LE for Cross Stitch.)

I want to believe



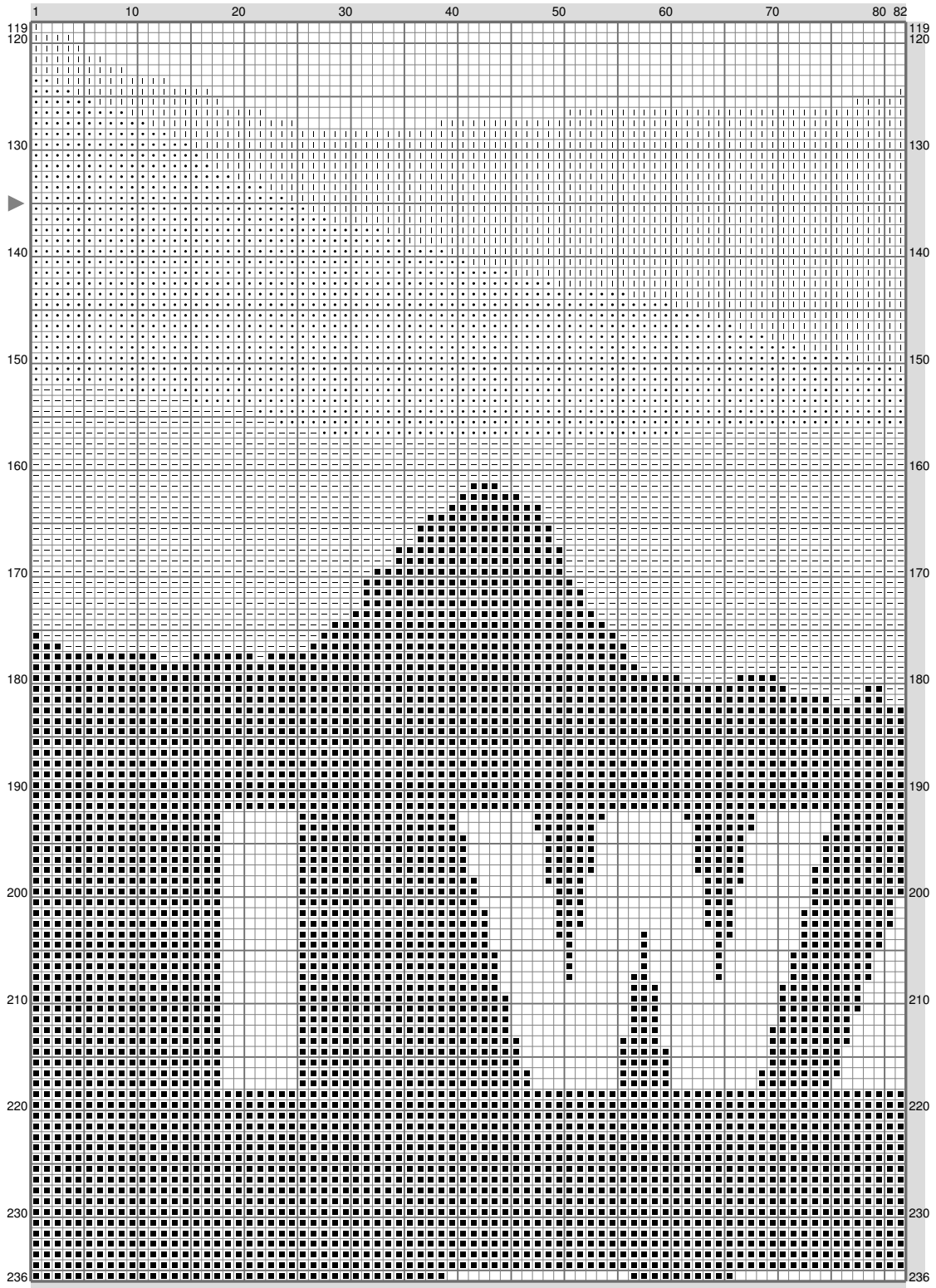
(This chart is printed using KG-Chart LE for Cross Stitch.)

I want to believe



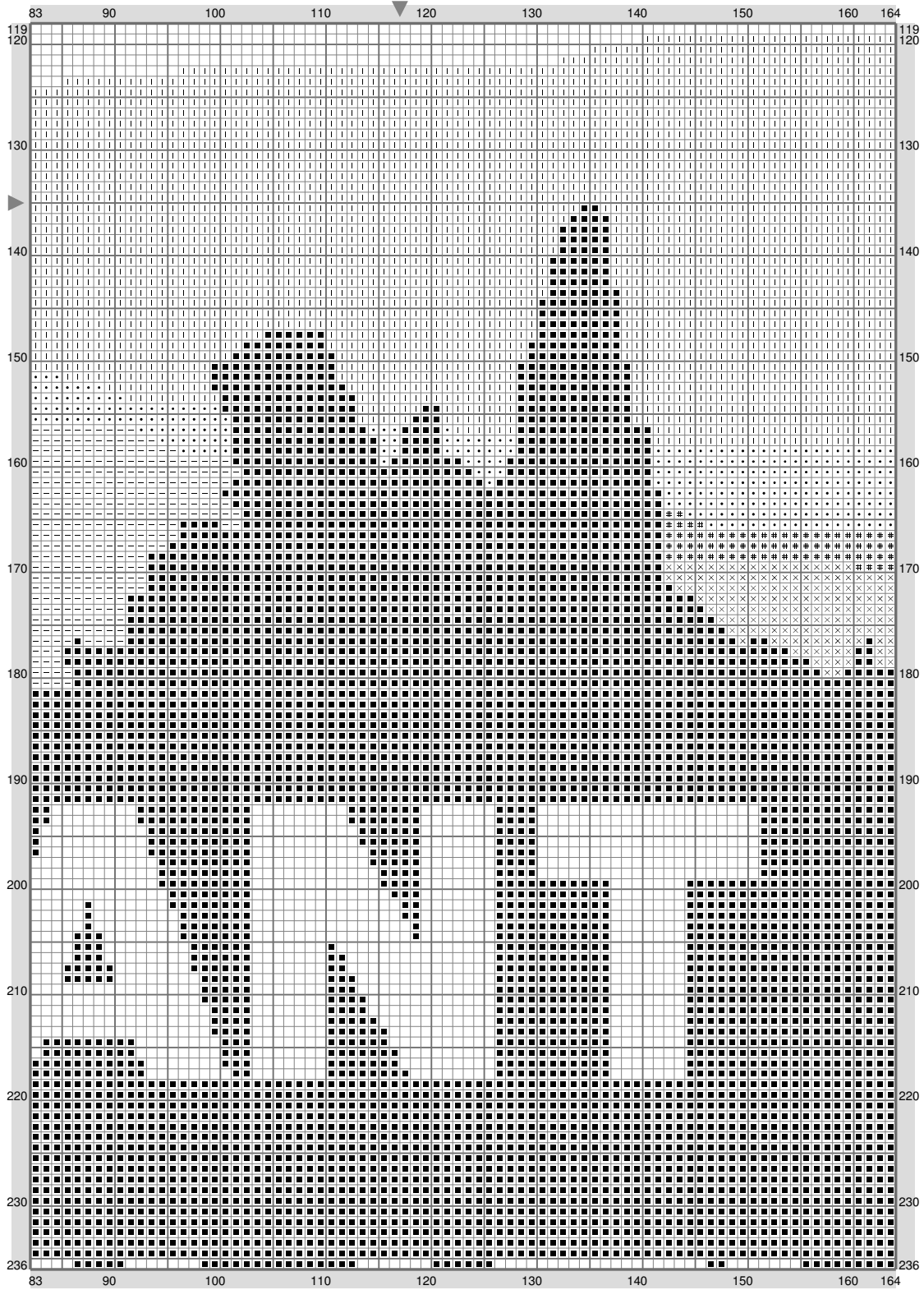
(This chart is printed using KG-Chart LE for Cross Stitch.)

I want to believe



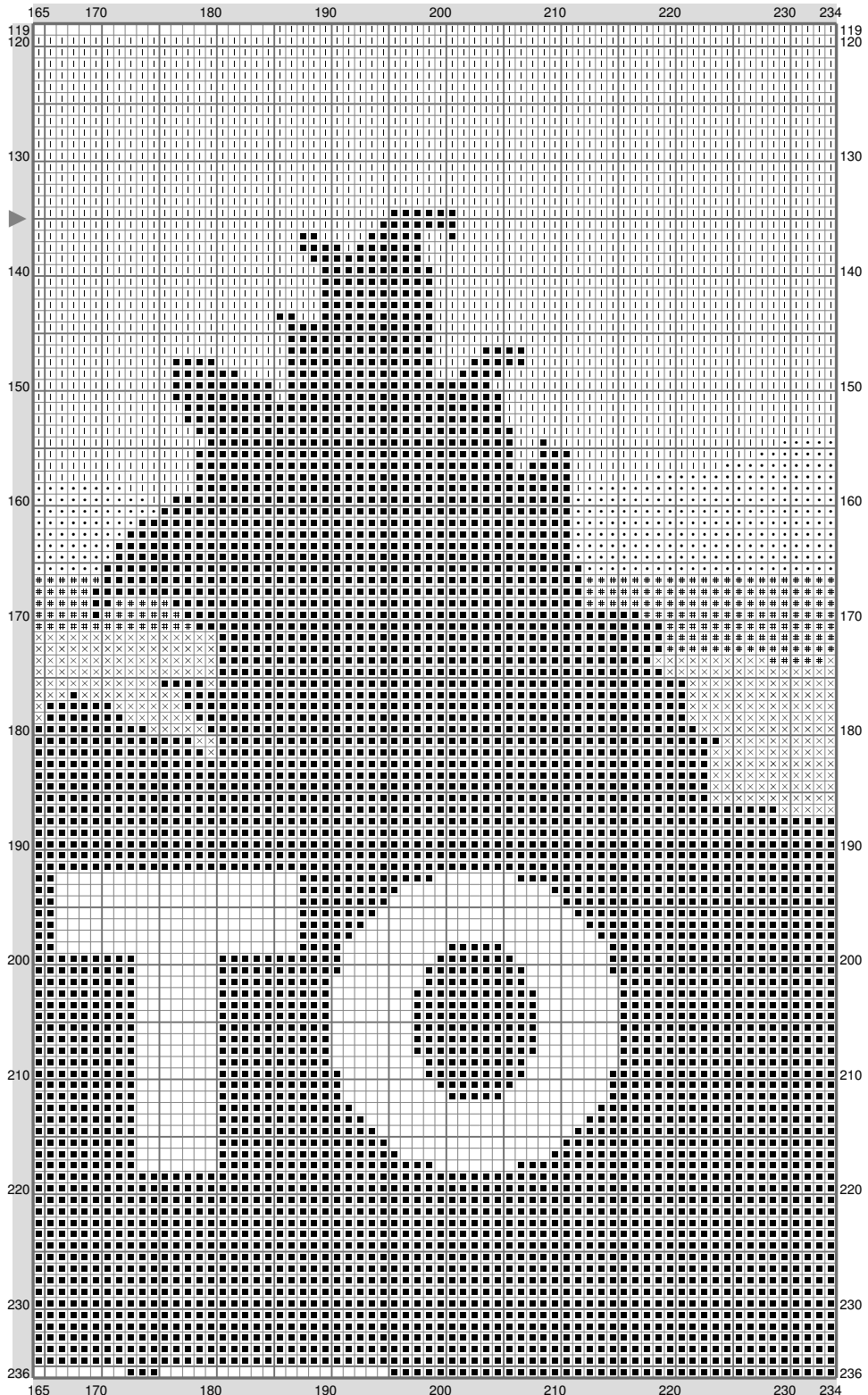
(This chart is printed using KG-Chart LE for Cross Stitch.)

I want to believe



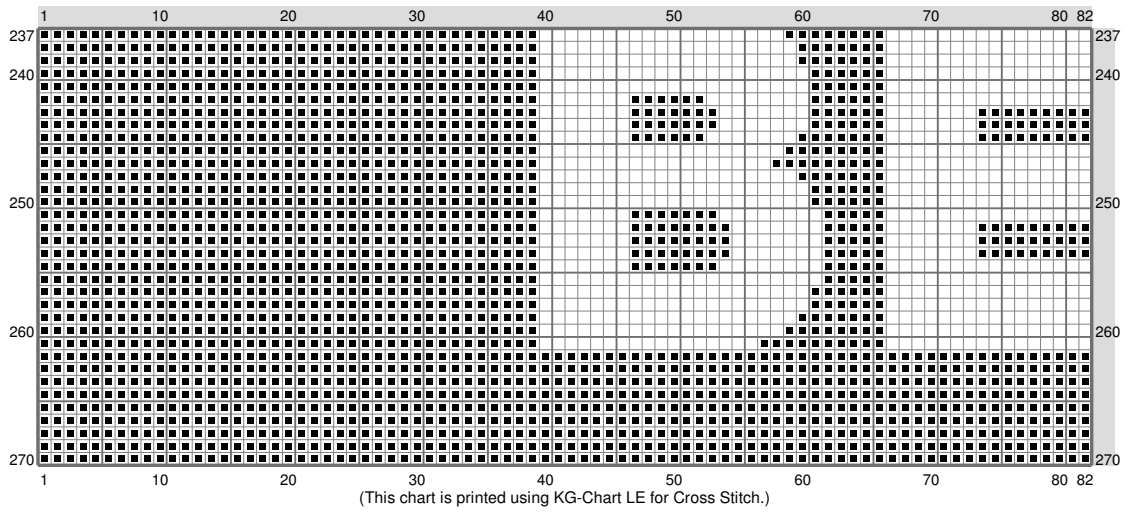
(This chart is printed using KG-Chart LE for Cross Stitch.)

I want to believe

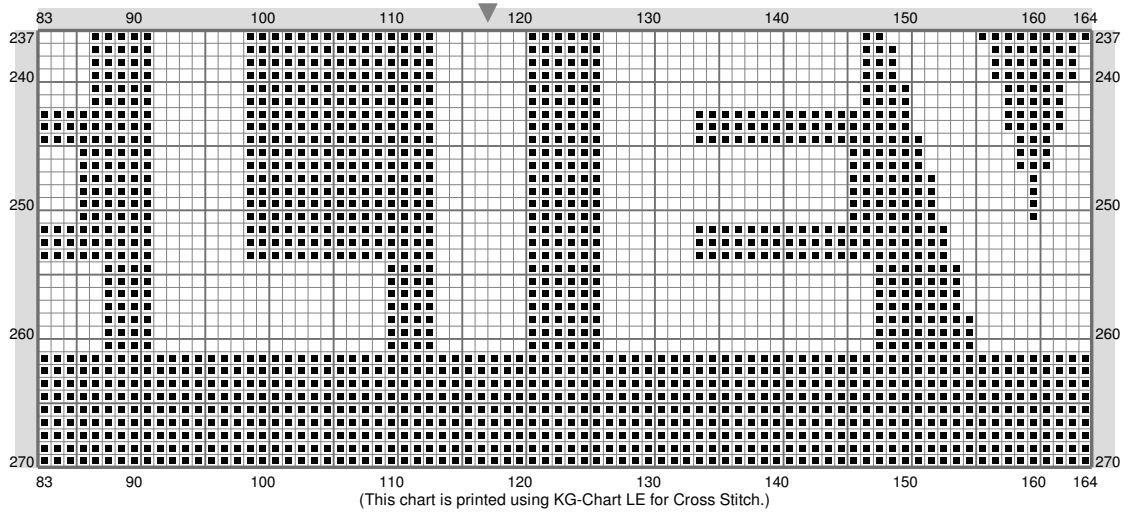


(This chart is printed using KG-Chart LE for Cross Stitch.)

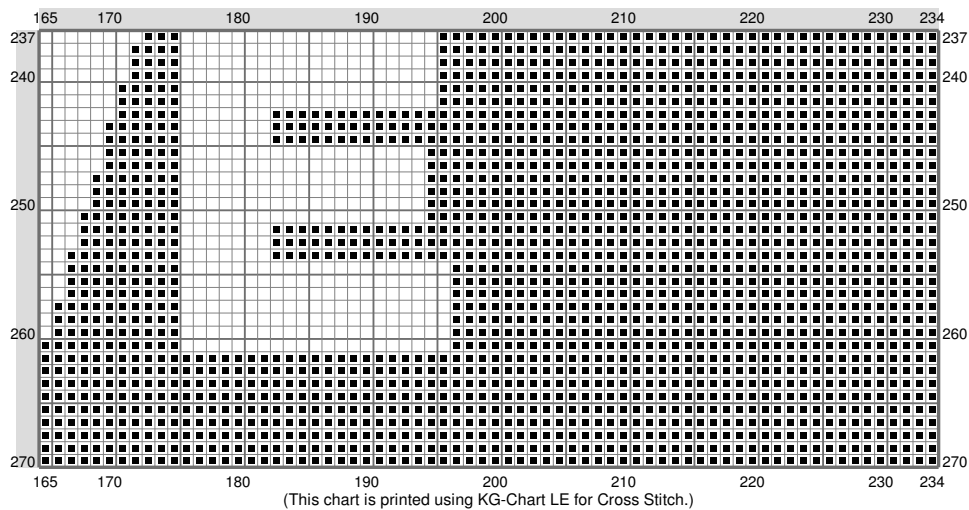
I want to believe



I want to believe



I want to believe



Stitch Count: 234w x 270h
 Finished Size: 66.04 cm x 76.2 cm (18 ct./inch)
 Cloth: Aida
 Cloth's Color: White
 # of colors: 12 Colors

Color Table (DMC)

Cross Stitch

■	310	(20108 ct)
—	319	(1858 ct)
#	502	(256 ct)
F	535	(67 ct)
□	640	(111 ct)
×	895	(429 ct)
●	926	(1983 ct)
I	931	(6160 ct)
<	934	(67 ct)
▲	939	(202 ct)
*	3021	(83 ct)
N	3022	(106 ct)